

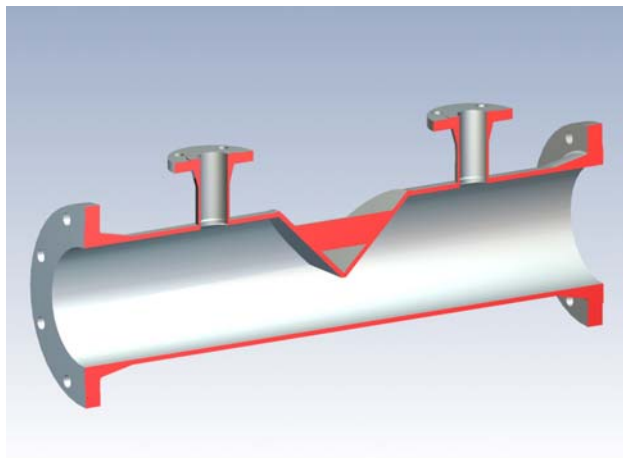
EMCOWEDGE Type EWF Wedge type Differential Pressure Producer

Principle

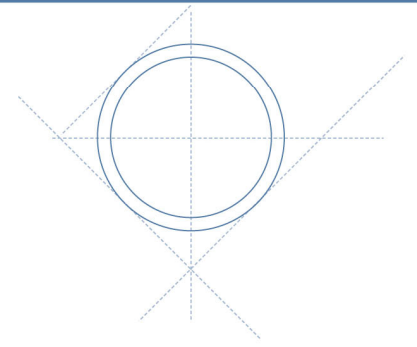
EMCOWEDGE is used as primary element in flow measurement of liquid, gas and steam according to the differential pressure principle.

Construction

Design and calculation standards	: EN, PED 97/23 EC, ANSI/ASME and RW Miller
Sizes	: DN 50 - 900 2" - 36"
Pressure rating	: PN 10 - 250, 150 - 1500 lbs
Material	: Carbon steel P235GH, P250GH, P265GH, A105N, A106 Gr. B, AISI 316, Duplex, Super Duplex, 6Mo, heat-resisting steels, other materials on request
Mounting style	: Flanges connection according to DIN or ANSI
Pressure taps	: DN 50 and DN 80, 2" and 3"
Flange facing	: Flat or raised face according to DIN 2526 or flat, raised face or ring type joint according to ANSI B 16.5
Element ratio (H/D)	: 0,2, 0,3, 0,4 and 0,5 (0,4 is standard).



0-06-071-0



Technical Data

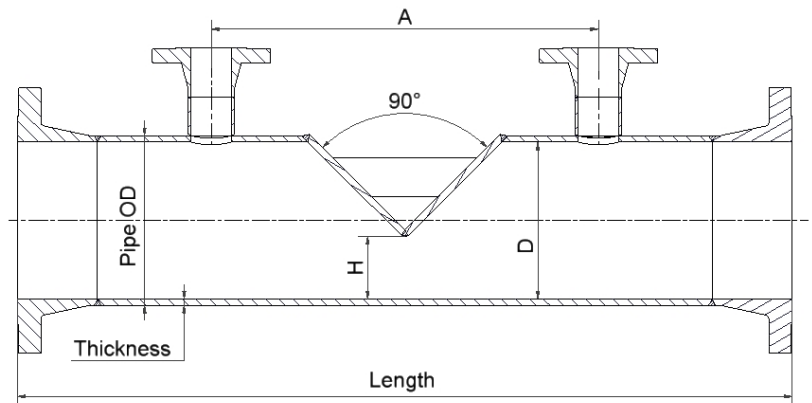
- Accuracy : +/- 4-5 % (un-calibrated), +/- 0,5 % (calibrated).
- Repeatability : +/- 0,2 %
- Pressure loss : 40 % of measured differential pressure with ratio H/D 0,4
- Limits for Reynolds No. : Re > 500
- Viscosity : Up to 3000 Cp
- Installation requirement : down to 5 x D up-stream and 2 x D down-stream.

Advantages

- Very suitable for viscous liquids.
- Not sensitive to solid particles in the fluid. Bi-directional flow possible.
- For very low Reynolds Nos.
- Suitable for erosive fluids.
- No risk of clogging. Self cleaning.

Accessories

- Shut-off valves and condensing chambers for steam flow measurement.



Dimensions

DN/Inch	A	Length 150-600 lbs	Length 900-1500 lbs	Length PN16-100	Length PN160-250
50/2"	300	770	770	500	500
65	334	810	810	550	550
80/3"	372	880	880	600	600
100/4"	422	900	940	850	800
125/5"	476	980	1060	920	700
150/6"	528	1030	1140	990	900
200/8"	604	1140	1300	1100	1000
250/10"	694	1270	1470	1220	1100
300/12"	784	1370	1620	1340	1200
350/14"	836	1440	1690	1410	1300
400/16"	914	1540	1810	1510	1400
18"	1004	1640	1930	-	1500
500/20"	1108	1760	2090	1660	1600
600/24"	1248	1930	2330	1770	1800
700/28"	1390	2130	-	1910	2000
750/30"	1468	2240	-	1990	2100
800/32"	1544	2340	-	2090	2200
900/36"	1678	2520	-	2240	2400

All dimensions in mm